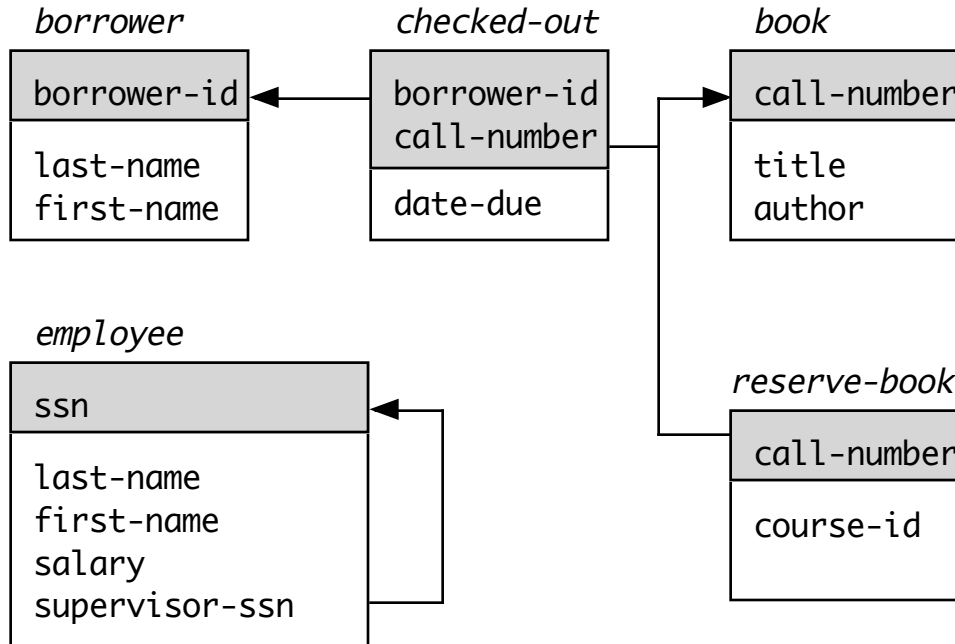


## CS352: DATABASE SYSTEMS - Example Database for Relational Model Lectures



Simplifying assumptions for this example:

- 1) author of a book is single-valued
- 2) there is only one copy of a book with a given call number
- 3) a given book can only be on reserve for a single course
- 4) course-id is presumably a foreign key in a table not shown

*borrower*(*borrower\_id*, *last\_name*, *first\_name*)

12345	aardvark	anthony
20147	cat	charlene
89754	dog	donna
60984	fox	frederick
54872	zebra	zelda

*book*(*call\_number*, *title*, *author*)

QA76.093	Wenham Zoo Guide	elephant
RZ12.905	Fire Hydrants I Have Known	dog
LM925.04	21 Ways to Cook a Cat	dog
AB123.40	Karate	koala

*checked\_out*(*borrower\_id*, *call\_number*, *date\_due*)

89754	RZ12.905	2002-11-10
89754	LM925.04	2002-11-10
20147	AB123.40	2002-11-15

*reserve\_book*(*call\_number*, *course\_id*)

QA76.093	BY123
AB123.40	PE075

*employee*(*ssn*, *last\_name*, *first\_name*, *salary*, *supervisor\_ssn*)

123-45-6789	aardvark	anthony	40000	null
567-89-1234	buffalo	boris	30000	123-45-6789
890-12-3456	elephant	emily	50000	123-45-6789
111-11-1111	fox	frederick	45000	567-89-1234